

# PROFESSIONAL SCRAP & WASTE HANDLING CAT® GSH ORANGE PEEL GRAPPLES



ENVIRONMENTAL REGULATIONS

PRESSURE TO RECYCLE

HARSH APPLICATION

Recycling companies are forced to **look for most efficient and reliable** ways to deal with scrap and waste on site.





# Cat Material Handler plus Cat Orange Peel Grapple

## OPTIMAL MATERIAL HANDLING SOLUTION

All-round versatility for both **scrap and  
waste handling work.**

**High capacities.** Accurately stated.

Powerful closing force.

Fast opening and closing for short cycle times.

**Move more tons per hour.**

**Four tine,** square footprint for:

- Clean corners in rail cars and trailers.
- Safe grab closure for bulky goods like bars and car bodies

**Five tines** provide:

- Optimal retention of smaller material like shred.

Semi-open and closed tines options are available to further refine the GSH to meet your specific material needs.

# PRODUCTIVITY SOLUTION

FAST OPEN/CLOSE

POWERFUL GRIP

GENEROUS LOADS

TRUE CAPACITIES



# Move volume

every hour ...

every day...

every week ...

# every year.

Add it up for

# more tons per hour.

## Easy, Safe Cat System Solution

- Pre-programmed hydraulic settings
- Cylinder dampening for smooth control when opening
- Crosshead bracket locks for easy, safe grapple installation



# MATERIAL HANDLING SOLUTION

## Attack and Transfer

### Precise positioning

- Bi-directional, 360° rotation

### Penetrate Deep, Stack High

- Short overall height
- High inside contour

### 4-tine, square profile

- Work close to walls and container sides

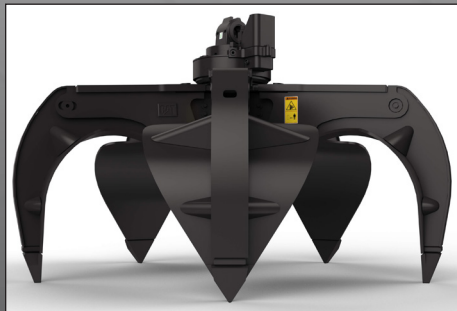
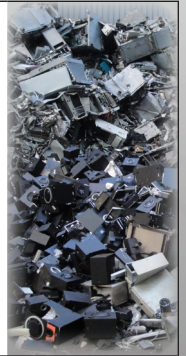
### Excellent tine tips

- Penetrate into the pile
- Close tight for picking applications
- Replaceable for long tip life.

## Tine Style Options



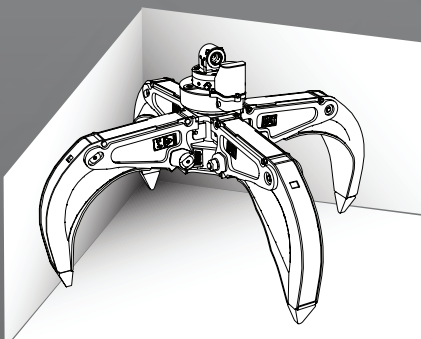
Semi-open tines for handling large scrap.



Closed tines for picking up shred.

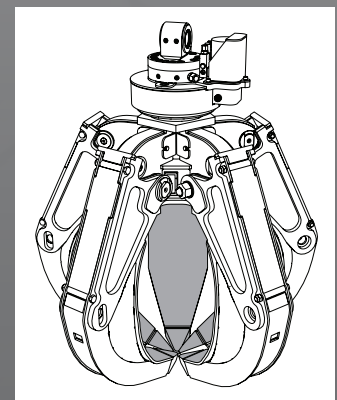


## Configuration Options



Square footprint of the four-tine grapple lends this configuration to more easily fit inside trucks, containers and rail cars. Four tines are beneficial when handling larger scrap like an automobile.

Five-tines provide close tine spacing and good retention of smaller loose material.

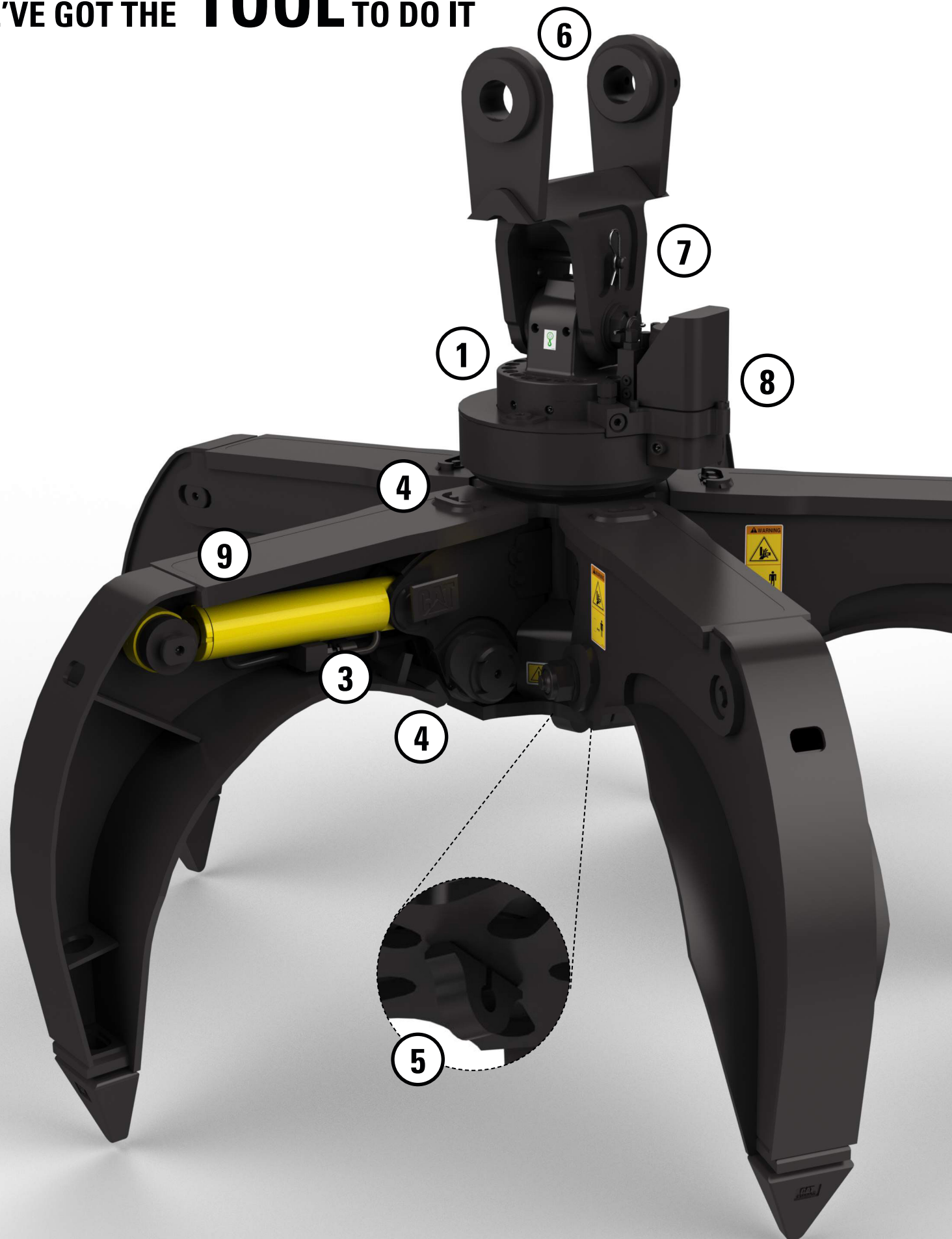




		4 Tines	5 Tines	
		Semi-Closed (S)	Semi-Closed (S)	Closed (C)
<b>FERROUS</b>	Small-sized pieces (shredded)	○	○	×
	Large-sized pieces up to 1000 x 1000 mm (steel scrap, wrought iron, white goods, car engines etc.)	●	●	×
	Heavy long sized pieces (I-beams, pipes, plates)	●	●	×
	Car bodies	●	●	×
<b>NON-FERROUS</b>	Small-sized pieces (beverage cans, electric devices, e-scrap)	○	×	●
	Large sized pieces (car radiators, batteries)	●	●	○
	Wires and cables (copper, lead)	●	●	○
<b>OTHER</b>	Waste, plastics, carton, tires, leather, textile, rubber	●	●	○
	Rocks, concrete blocks	●	●	×

<b>Recommended</b>	●
<b>Possible, but not best option</b>	○
<b>Not Recommended</b>	×

YOU'VE GOT A **JOB** TO DO,  
WE'VE GOT THE **TOOL** TO DO IT





Closed Tines



2

Semi-open Tines



## 1 ROTATION SYSTEM

- Motor driven gear on a slew bearing turns the grapple 360° in either direction for easy positioning.
- High torque motor ensures a long service life.

## 2 TINES

- 4 or 5 tine grapple options.
- Semi-open or closed tines available to handle virtually any type of scrap or recycling job.
- Solid construction inner tines and tips are built of high grade steel to resist abrasion and metal-on-metal wear.
- Casted tips are replaceable.

## 3 CYLINDER

- Powerful clamping capability. Uses full system pressure and power to hold the load.
- Cushioned tine opening movement.
- Hydraulic matched up to 350 bar (5,075 psi).
- Fully enclosed. Downtime due to cylinder and hose damage is greatly minimized.

## 4 UPPER & LOWER STOPS

- Reliable. Prevents cylinders from overextending.
- Heavy duty, abrasion resistant.

## 5 LIFT EYE

- For mounting a magnet.

## 6 HINGE POINTS

- Heavy duty, hardened pins and high quality bushings absorb and minimize distortion.
- Heavy duty, abrasion resistant hinge structure incorporated into housing structure.
- Yearly service is recommended for maximum efficiency.

## 7 AIDED MOUNTING BRACKET

- One person can safely install and remove the grapple.
- A solid pin locks the bracket up-right for easy installation and removal.

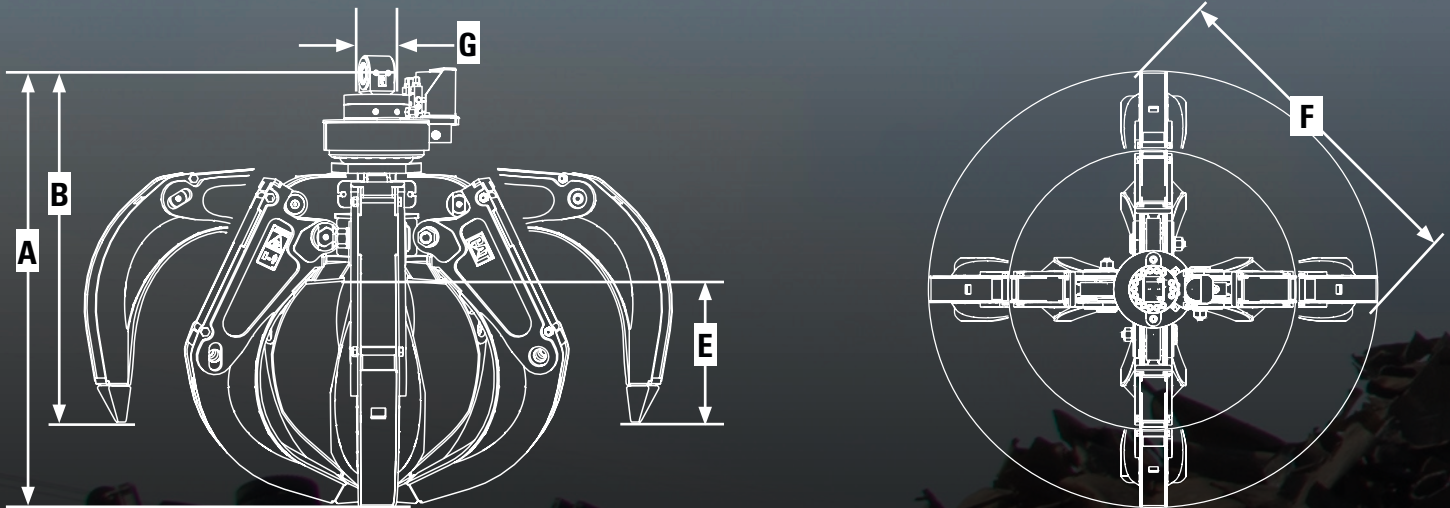
## 8 COMPACT DESIGN

- Low profile and short overall height keeps the grapple up high and close to the stick, allowing operator to reach further up on the scrap pile.

## 9 EASY TO MAINTAIN

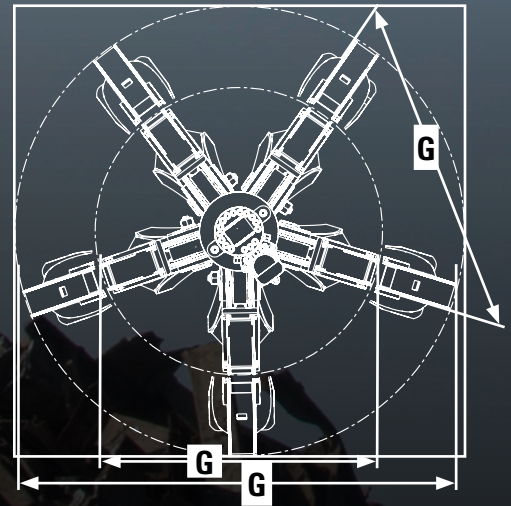
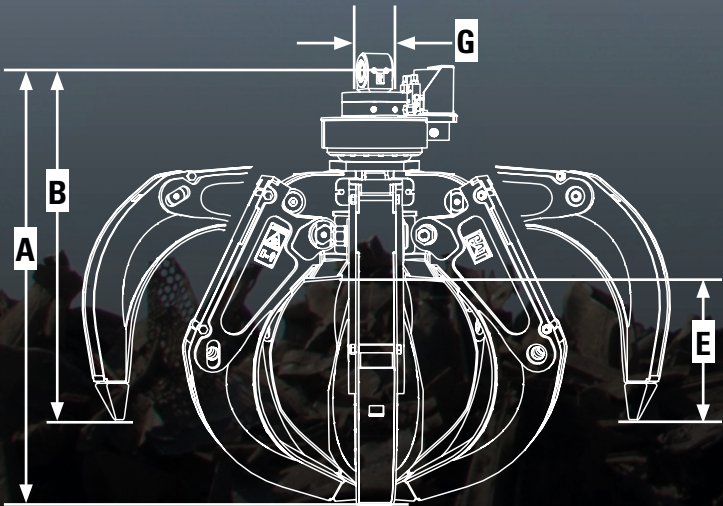
- Removable panels provide easy inside-the-tine access.
- Dust seals are located inside the tine for protection from damage. Less grease is used.
- Ground level grease points simplify the daily maintenance process while improving safety.

# 4-TINE SPECIFICATIONS & DIMENSIONS



		GSH425					
		4-tine		4-tine		4-tine	
Tine Configuration		466-8410		466-8411		466-8412	
Part Number, Semi-closed tines		466-8410		466-8411		466-8412	
Part Number, Closed tines							
Capacity	L (yd <sup>3</sup> )	750 (1.0)	950 (1.25)	1,150 (1.5)			
Operating Weight,* Semi-closed tine	kg (lb)	1,520 (3,344)	1,559 (3,430)	1,613 (3,549)			
Operating Weight,* Closed tine	kg (lb)						
Maximum Lift Capacity	kg (lb)	10,000 (22,000)	10,000 (22,000)	10,000 (22,000)			
<b>Dimensions</b>							
<b>A</b> Height, tines closed	mm (in)	1,735 (68.31)	1,855 (73.03)	1,970 (77.56)			
<b>B</b> Height, tines open	mm (in)	1,450 (57.09)	1,510 (59.45)	1,570 (61.81)			
<b>C</b> Diameter, tines closed	mm (in)	1,860 (73.23)	1,860 (73.23)	1,860 (73.23)			
<b>D</b> Diameter, tines open	mm (in)	2,415 (95.08)	2,610 (102.76)	2,820 (111.02)			
<b>E</b> Ground clearance, tines open	mm (in)	655 (25.79)	715 (28.15)	770 (30.31)			
<b>F/G</b> Overall width	mm (in)	1,825 (71.85)	1,965 (77.36)	2,110 (83.07)			
<b>H</b> Width of mounting head	mm (in)	150 (5.91)	150 (5.91)	150 (5.91)			
Pin diameter	mm (in)	80 (3.15)	80 (3.15)	80 (3.15)			
<b>Hydraulic open/close</b>							
Maximum pressure	bar (psi)	350 (5,076)	350 (5,076)	350 (5,076)			
Optimum flow	L/min (gpm)	200 (52.8)	200 (52.8)	200 (52.8)			
<b>Hydraulic rotation</b>							
Maximum pressure	bar (psi)	220 (3,191)	220 (3,191)	220 (3,191)			
Optimum pressure	bar (psi)	160 (2,321)	160 (2,321)	160 (2,321)			
Optimum flow	L/min (gpm)	20 (5.3)	20 (5.3)	20 (5.3)			

# 5-TINE SPECIFICATIONS & DIMENSIONS



		GSH525					
		5-tine		5-tine		5-tine	
Tine Configuration		466-8408		462-3810		466-8409	
Part Number, Semi-closed tines		473-7062		473-7063		473-7064	
Part Number, Closed tines		750 (1.0)		950 (1.25)		1,150 1.5	
Capacity	L (yd <sup>3</sup> )	1,809 (3,980)		1,860 (4,092)		1,925 (4,235)	
Operating Weight,* Semi-closed tine	kg (lb)	2,002 (4,404)		2,082 (4,580)		2,169 (4,772)	
Operating Weight,* Closed tine	kg (lb)	10,000 (22,000)		10,000 (22,000)		10,000 (22,000)	
Maximum Lift Capacity	kg (lb)						

## Dimensions

<b>A</b> Height, tines closed	mm (in)	1,735 (68.3)	1,855 (73.0)	1,970 (77.6)
<b>B</b> Height, tines open	mm (in)	1,450 (57.1)	1,510 (59.4)	1,570 (61.8)
<b>C</b> Diameter, tines closed	mm (in)	1,860 (73.2)	1,860 (73.2)	1,860 (73.2)
<b>D</b> Diameter, tines open	mm (in)	2,415 (95.1)	2,610 (102.8)	2,820 (111.0)
<b>E</b> Ground clearance, tines open	mm (in)	655 (25.8)	715 (28.1)	770 (30.3)
<b>F/G</b> Overall width	mm (in)	2,230 (87.8)	2,410 (94.9)	2,595 (102.2)
<b>H</b> Width of mounting head	mm (in)	150 (5.9)	150 (5.9)	150 (5.9)
Pin diameter	mm (in)	80 (3.1)	80 (3.1)	80 (3.1)

## Hydraulic open/close

Maximum pressure	bar (psi)	350 (5,076)	350 (5,076)	350 (5,076)
Optimum flow	L/min (gpm)	200 (52.8)	200 (52.8)	200 (52.8)

## Hydraulic rotation

Maximum pressure	bar (psi)	220 (3,191)	220 (3,191)	220 (3,191)
Optimum pressure	bar (psi)	160 (2,321)	160 (2,321)	160 (2,321)
Optimum flow	L/min (gpm)	20 (5.3)	20 (5.3)	20 (5.3)

## Grapple / Machine Compatibility

### Orange Peel Grapples

#### Matching Guide

	Hydraulic Excavators	Wheeled Excavator	Material Handlers
GSH425	320, 321, 323, 324, 325, 326, 328, 329, 330, 335	M318, M320, M322, M325	325, 330, 3022, 3024, 3027, 3037, 3049
GSH525	320, 321, 323, 324, 325, 326, 328, 329, 330, 335	M318, M320, M322, M325	325, 330, 3022, 3024, 3027, 3037, 3049

This matching guide is for indication only. Please contact your dealer for more information.

**Scan the QR code to see the GSH-series grapples in action!**



GEHQ9211 (01-16)

For more complete information on Cat products, dealer services, and industry solutions, visit us on the web at [www.cat.com](http://www.cat.com)

©2016 Caterpillar  
All Rights Reserved

Materials and specifications are subject to change without notice. Featured machines in photos may include additional equipment. See your Cat dealer for available options.

CAT, CATERPILLAR, BUILT FOR IT, their respective logos, "Caterpillar Yellow," and the POWER EDGE trade dress, as well as corporate and product identity used herein, are trademarks of Caterpillar and may not be used without permission.

